

126°51'0"W 126°50'0"W 126°49'0"W 126°48'0"W 126°47'0"W 126°46'0"W 126°45'0"W 126°44'0"W 126°43'0"W 126°42'0"W 126°41'0"W 126°40'0"W

Location Map Barrett Hat Trail

Difficulty: Easy Cell Coverage: Yes
Trail Length: 2.9 km Distance from Houston: 13 km

Description
Great view of the Telkwa Range and the Bulkley Valley. Suitable for all ages. Close to Houston. Good trail for mountain bikes or that quick run in the evening. Great place for a picnic, but be sure to pack all garbage back out.

Features
There are footings of an old forest lookout tower on top of the hill. The hill is the neck of an ancient volcano. You can see the vertical plane of the rock near the top. If you walk through the trees toward the south, you'll find a steep rocky cliff and a good view.

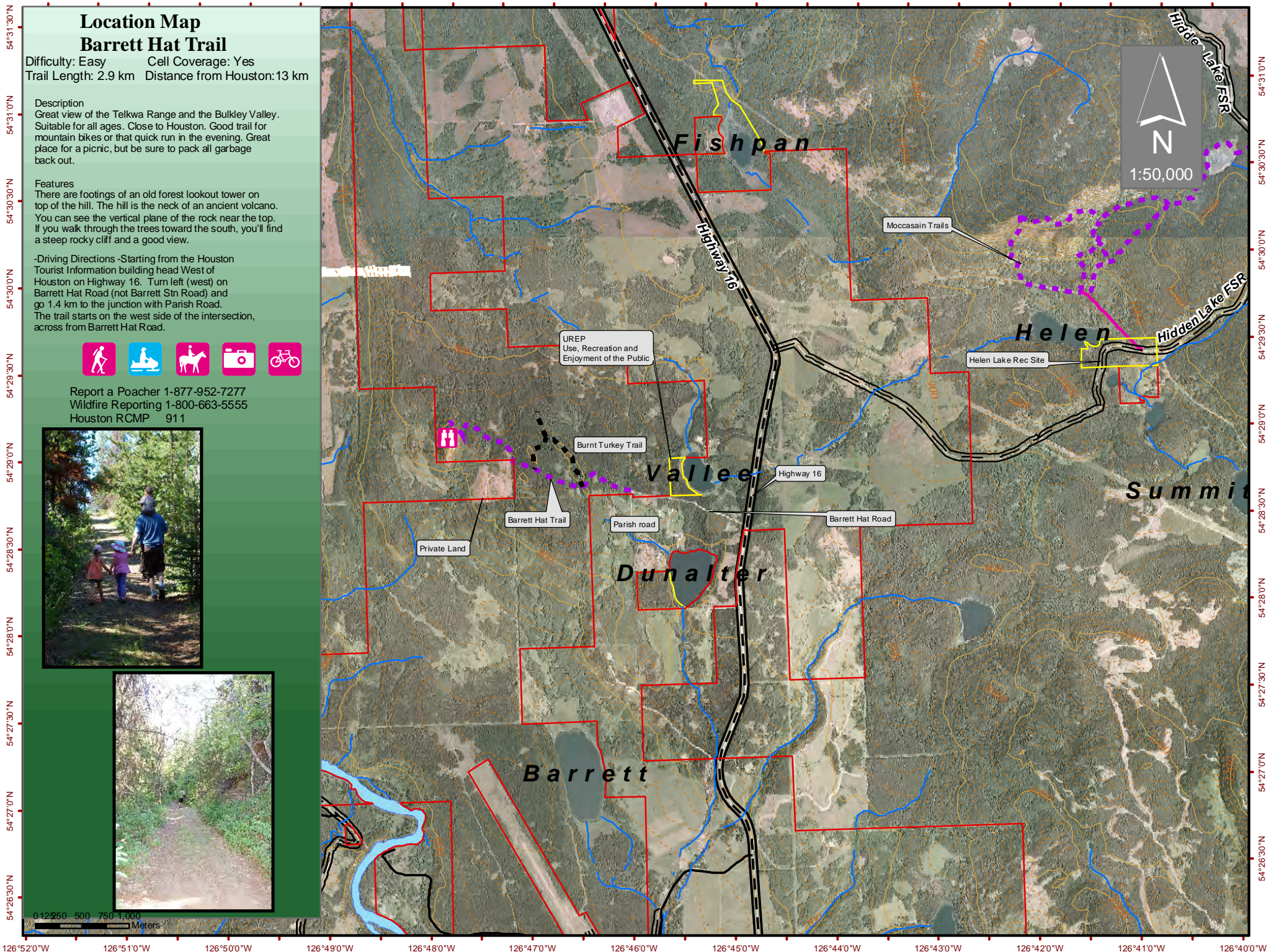
-Driving Directions- Starting from the Houston Tourist Information building head West of Houston on Highway 16. Turn left (west) on Barrett Hat Road (not Barrett Stn Road) and go 1.4 km to the junction with Parish Road. The trail starts on the west side of the intersection, across from Barrett Hat Road.



Report a Poacher 1-877-952-7277
Wildfire Reporting 1-800-663-5555
Houston RCMP 911



0 125 250 500 750 1,000
Meters



126°52'0"W 126°51'0"W 126°50'0"W 126°49'0"W 126°48'0"W 126°47'0"W 126°46'0"W 126°45'0"W 126°44'0"W 126°43'0"W 126°42'0"W 126°41'0"W 126°40'0"W