

LD Byman Trail

Difficulty: Moderate Cell Coverage: None
Trail Length: 3 km Distance from Town: 21.0 km

The L.D. Byman Trail is actually an old mining road/ skid trail. During the Swiss Fire it was pushed out to the base of Morice Mountain as a fire guard to protect the town of Houston. This is a multi use trail and can be quaded or hiked. Even though the trail is only 3 km long it is will have you puffing for air due to the steepness of the trail. The first third of the trail gently climbs up over the Huckleberry power line and follows along a creek after that the trail start to get steeper and the views begin.

Near the top Mountain goats are quite visible on adjacent slopes. At the end on the trail you have a close up view of Morice Mountain. In the future a hiking only section will continue on up into the alpine.

Also don't forget to check out the Aspen Recreation site. This 8 unit campsite is located along the Morice River which is well known for its fishing but is also as an excellent destination for canoe trippers who have moving water experience. The rec site also contains two short trails, the Steelhead and Morice River trails.

Driving Directions:
Starting from the Houston Tourist Information building head West of Houston on Highway 16.

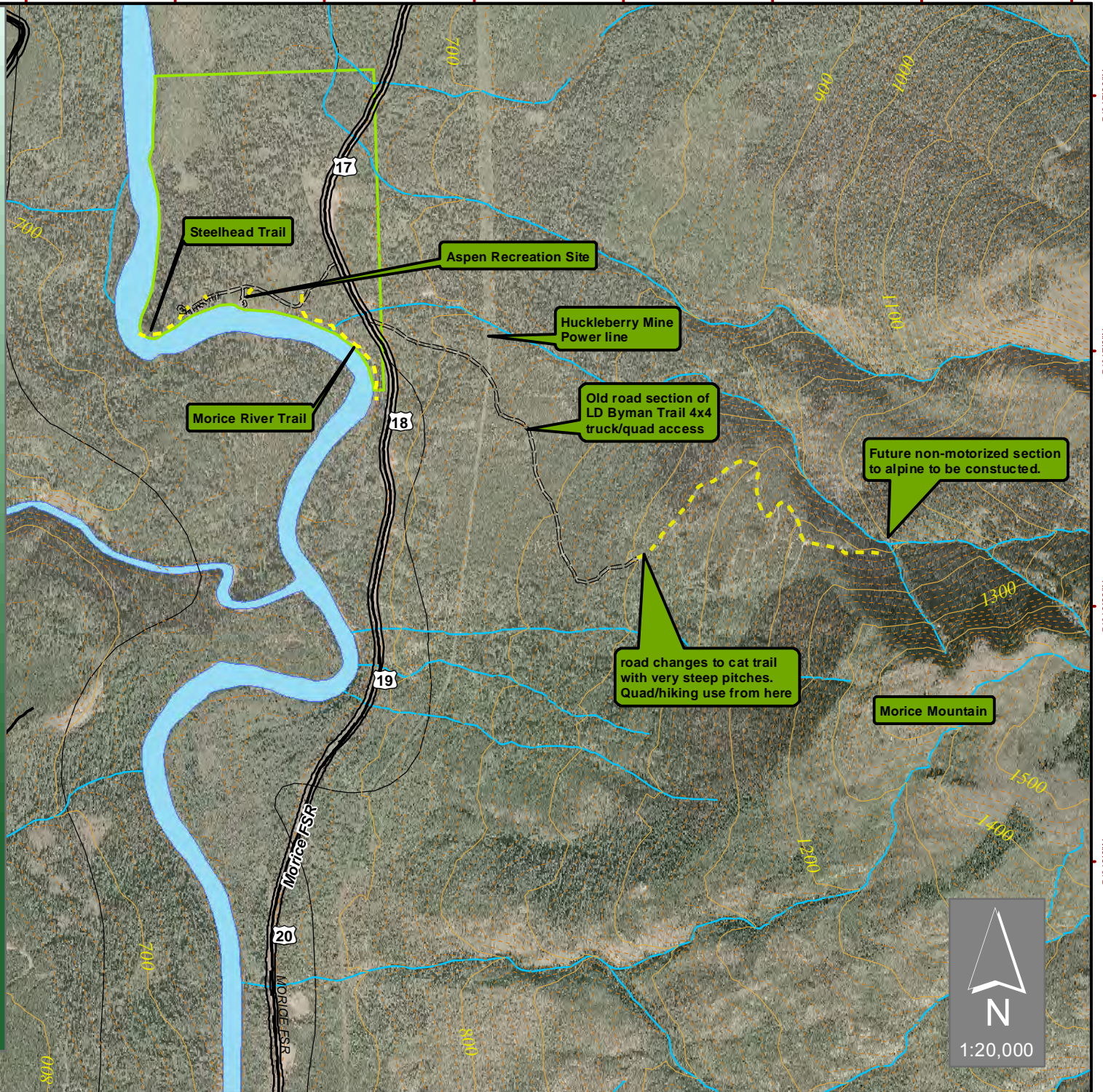
Turn left onto the Morice River Road.

At 17 Km you will arrive at the entrance to Aspen Rec Site (on the right), keep going past this and the trail sign is on the left side about 100 meters from the Aspen Site.



HoustonHikers.ca

Report a Poacher 1-877-952-7277
Wildfire Reporting 1-800-663-5555
Houston RCMP 911



Steelhead Trail

Aspen Recreation Site

Huckleberry Mine Power line

Old road section of LD Byman Trail 4x4 truck/quad access

Future non-motorized section to alpine to be constructed.

road changes to cat trail with very steep pitches. Quad/hiking use from here

Morice Mountain

