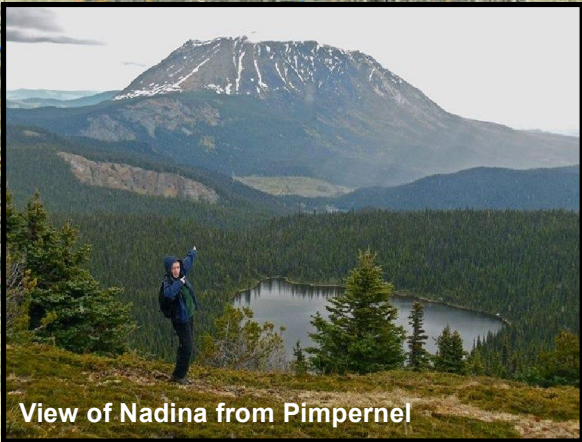
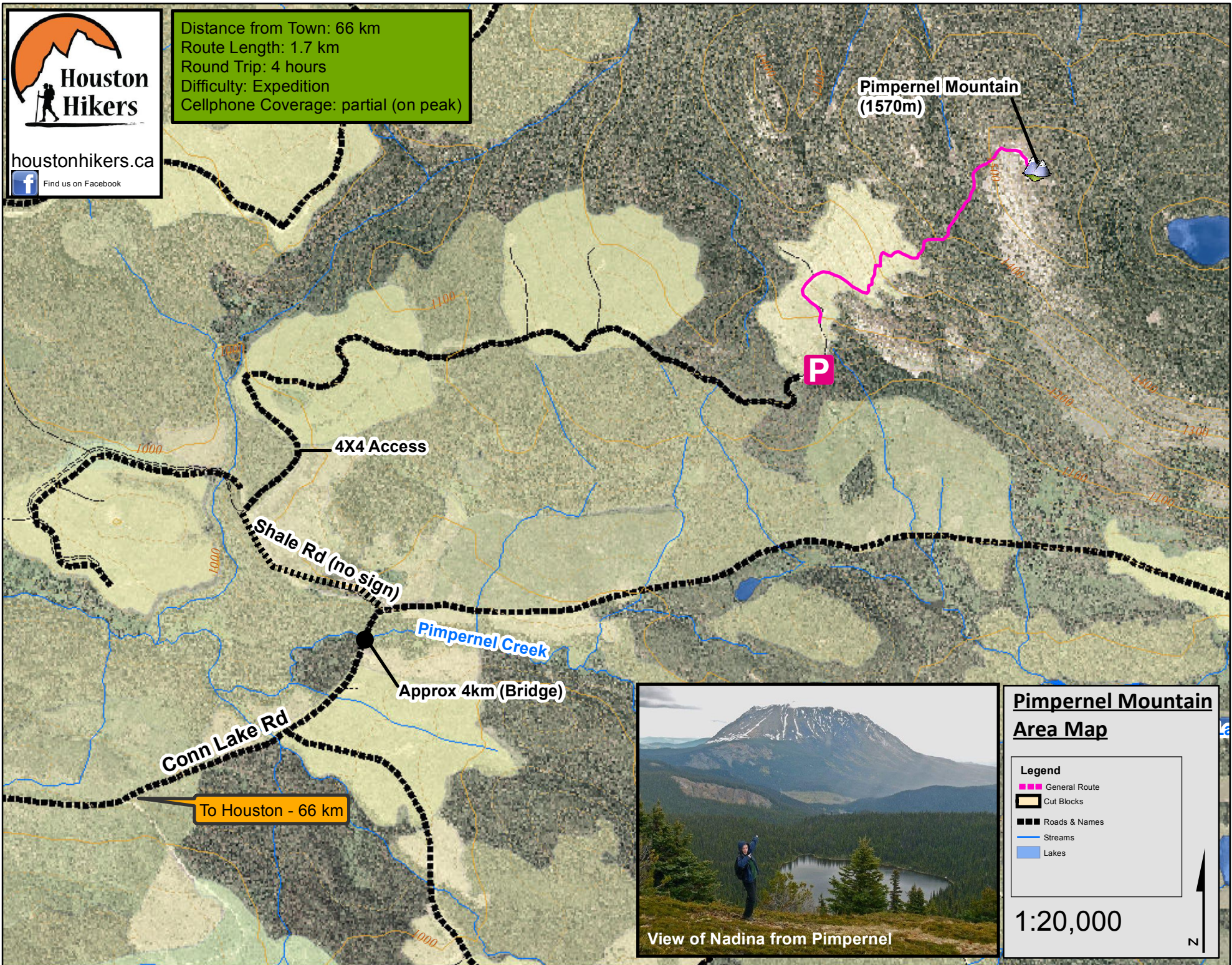




houstonhikers.ca  
Find us on Facebook

Distance from Town: 66 km  
Route Length: 1.7 km  
Round Trip: 4 hours  
Difficulty: Expedition  
Cellphone Coverage: partial (on peak)



### Pimpernel Mountain Area Map

- Legend**
- General Route
  - Cut Blocks
  - Roads & Names
  - Streams
  - Lakes

1:20,000

